

# FOR LEASE

## EXECUTIVE INDUSTRIAL PARK

6203 Johns Road, Suites 3 - 6, Tampa, Florida



### PROPERTY OVERVIEW

Executive Industrial park is an attractive industrial business park conveniently located north of Tampa International Airport, with easy access to the Veteran's Expressway:

- The area offers a variety of amenities including hotels, restaurants, shopping and banking, within a few minutes drive.
- Professionally managed
- Pleasant tree-scaped environment.

## PROPERTY STATISTICS

**Available SF**  
13,440

**Sprinkler System**  
100% Sprinklered

**Build-out**  
3,540 SF Office  
9,900 SF Warehouse

**Electrical Service**  
208 / 230V 3-Phase  
\*Units may vary depending on prior usage

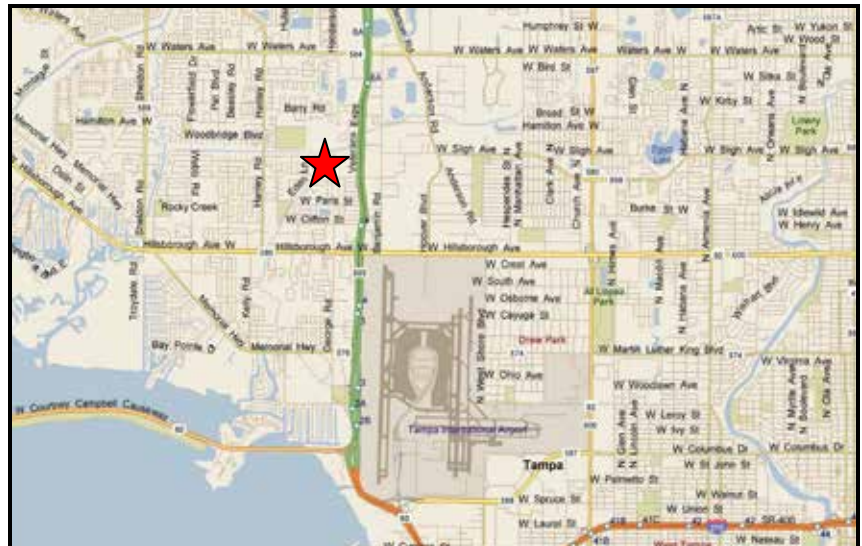
**Parking Facilities**  
2 spaces / 1,000 SF

**Warehouse Lighting**  
Strip Fluorescent

**Zoning**  
M

**Doors**  
Three (3) Dock High  
1 Ramp to Grade Level

**Ceiling Height**  
15' Clear



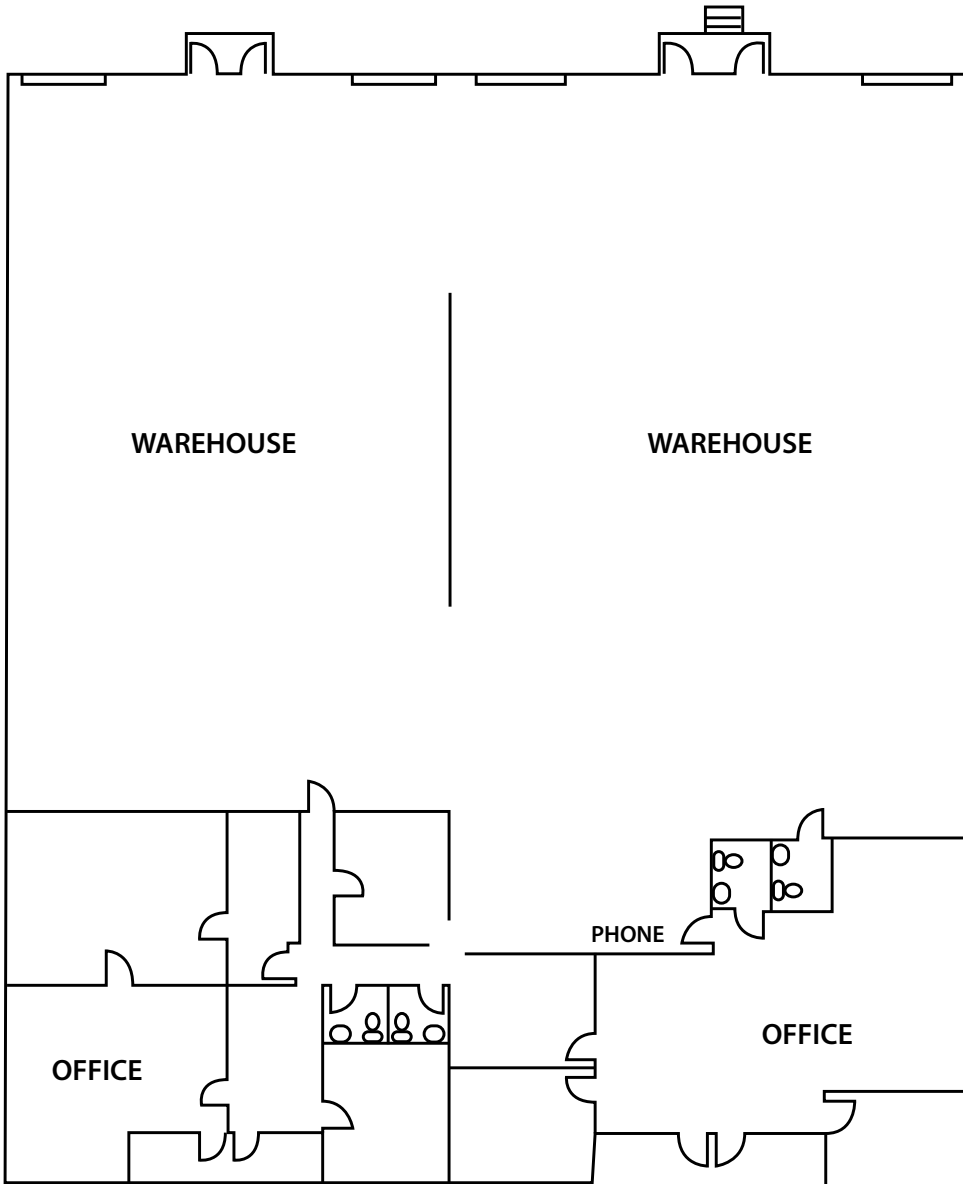
FIRST INDUSTRIAL REALTY TRUST, INC.  
5455 W. Waters Avenue, Suite 211, Tampa, Florida 33634  
T: (813) 884-6161 F: (813) 889-9469 [www.firstindustrial.com](http://www.firstindustrial.com)



# FOR LEASE

## EXECUTIVE INDUSTRIAL PARK

6203 Johns Road, Suite 3 - 6, Tampa, Florida



For more information, contact  
exclusive agent:

**John Ayers, CCIM**  
INDUSTRIAL BROKER

**IPG**

Industrial Property Group, Inc.

(813) 690-6539

[jayers@ccim.net](mailto:jayers@ccim.net)



All information furnished regarding the property for sale, rental or financing is obtained from sources deemed reliable. No representation is made to the accuracy thereof and is submitted subject to errors, omissions, change of rental price or other conditions, prior sale, lease or financing, or withdrawal without notice. First Industrial Realty Trust, Inc. represents the Seller Lessor in this transaction and as such owes all duties and obligations thereto.

FIRST INDUSTRIAL REALTY TRUST, INC.  
5313 Johns Road, Suite 201, Tampa, Florida 33634  
T: (813) 884-6161 F: (813) 889-9469 [www.firstindustrial.com](http://www.firstindustrial.com)

