

# 2,183 Sq. Ft. Warehouse FOR LEASE



**5432-C W. Crenshaw Street • Tampa, FL 33634**



- SPACE SIZE:** 2,183 Sq. Ft.
- OFFICE:** 1,528 Sq. Ft.
- WAREHOUSE:** 655 Sq. Ft.
- LOADING:** 1 Grade Level Door (10'x10')
- CLEAR HEIGHT:** 24 Feet
- SPRINKLERS:** Standard System
- LEASE RATE:** \$6.75 NNN

FOR MORE INFORMATION CONTACT:

**Industrial Property Group, Inc.**

Licensed Real Estate Broker

2202 N. Westshore Blvd. • Suite 200 • Tampa, FL 33607

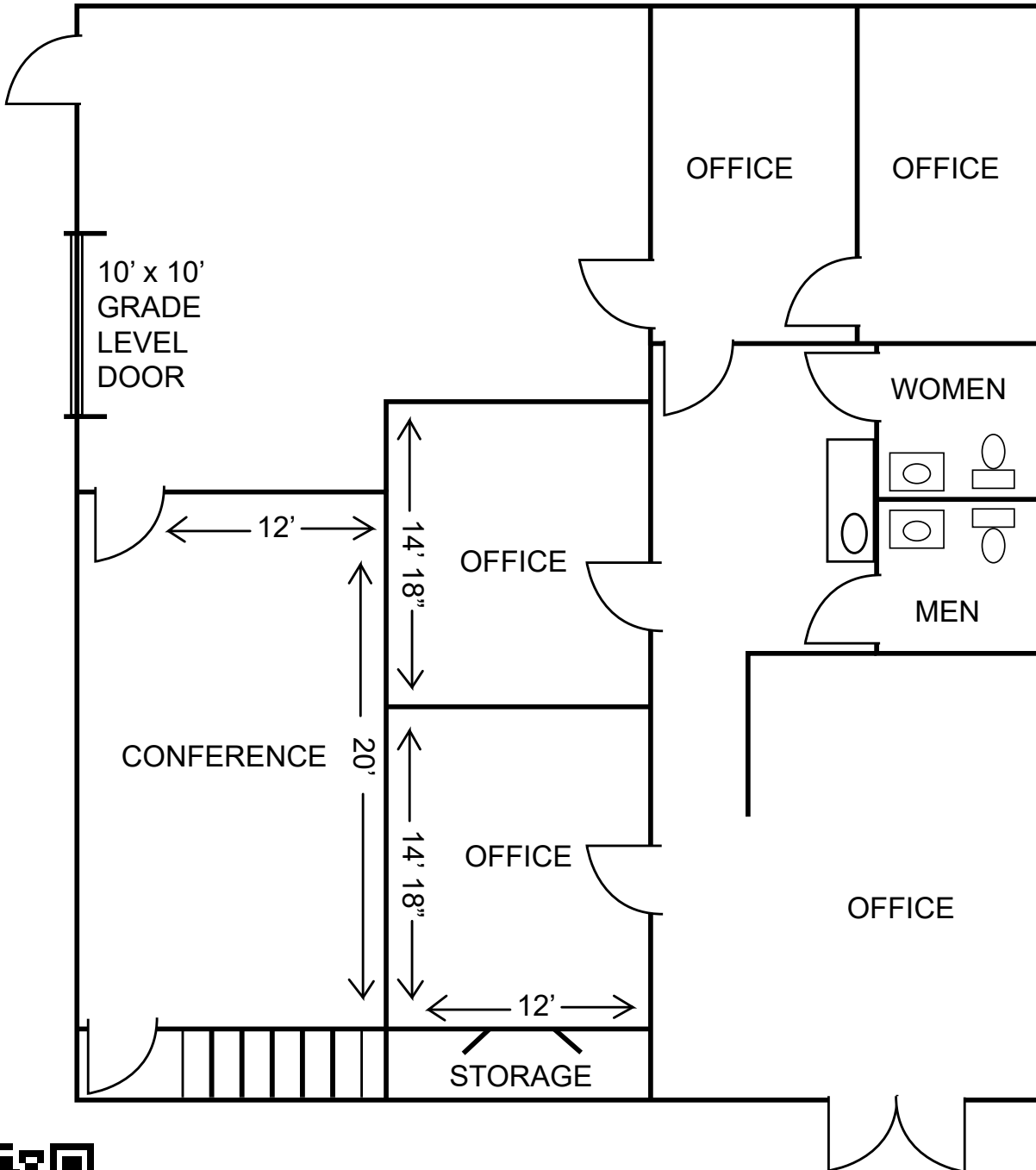
**CRAIG M. CAPO**

Cell: 813.335.3361 [craig@ipgtampa.com](mailto:craig@ipgtampa.com)

[www.tampaindustrialrealestate.com](http://www.tampaindustrialrealestate.com)

No warranty or representation, expressed or implied, is made as to the accuracy of the information contained herein, and same is submitted subject to errors, omissions, change of price, rental or other conditions, withdrawal without notice, and to any special listing conditions imposed by our principals.

**5432-C W. Crenshaw Street  
Tampa, FL 33634**



FOR MORE INFORMATION CONTACT:

**Industrial Property Group, Inc.**

Licensed Real Estate Broker

2202 N. Westshore Blvd. • Suite 200 • Tampa, FL 33607

**CRAIG M. CAPO**

Cell: 813.335.3361 [craig@ipgtampa.com](mailto:craig@ipgtampa.com)

[www.tampaindustrialrealestate.com](http://www.tampaindustrialrealestate.com)

No warranty or representation, expressed or implied, is made as to the accuracy of the information contained herein, and same is submitted subject to errors, omissions, change of price, rental or other conditions, withdrawal without notice, and to any special listing conditions imposed by our principals.