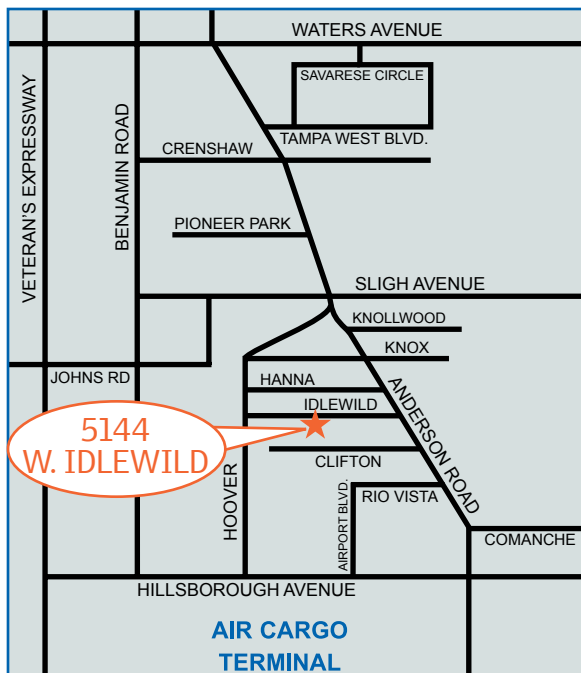


10,000 Sq. Ft. Warehouse FOR LEASE



**5144 W. Idlewild Avenue
Tampa, FL 33634**



SPACE SIZE:	10,000 Sq. Ft.
OFFICE:	600 Sq. Ft.
WAREHOUSE:	9,400 Sq. Ft.
LOADING:	1 Dock High (10'x10')
CLEAR HEIGHT:	18 Feet
POWER:	3 Phase
CONSTRUCTION:	Concrete Block
LEASE RATE:	\$4.95 NNN

FOR MORE INFORMATION CONTACT:

Industrial Property Group, Inc.

Licensed Real Estate Broker

2202 N. Westshore Blvd. • Suite 200 • Tampa, FL 33607

CRAIG M. CAPO

Cell: 813.335.3361

craig@ipgtampa.com

www.tampaindustrialrealestate.com

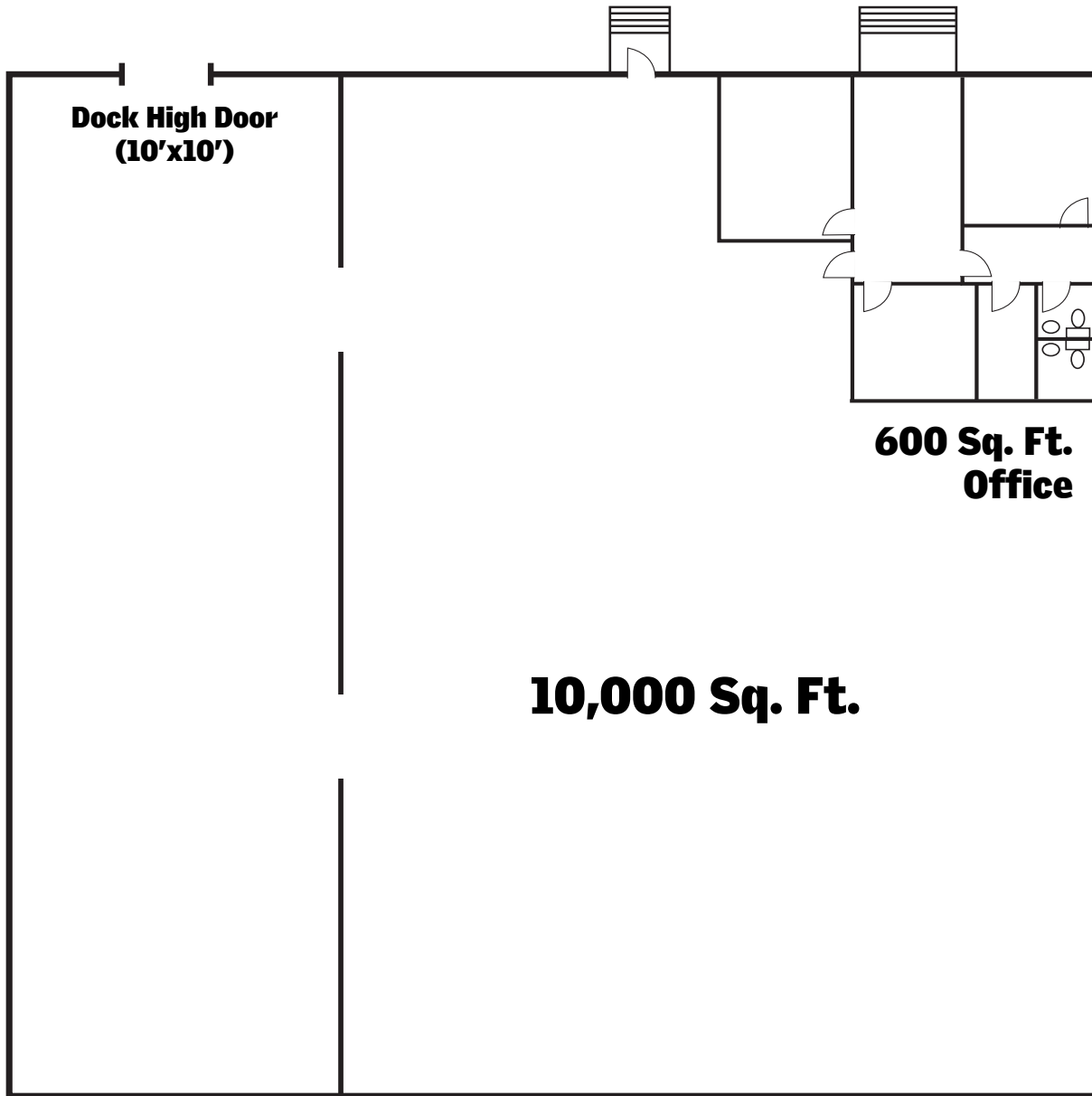
JOHN AYERS, CCIM

Cell: 813.690.6539

jayers@ccim.net

No warranty or representation, expressed or implied, is made as to the accuracy of the information contained herein, and same is submitted subject to errors, omissions, change of price, rental or other conditions, withdrawal without notice, and to any special listing conditions imposed by our principals.

**5144 W. Idlewild Avenue
Tampa, FL 33634**



Industrial Property Group, Inc.

Licensed Real Estate Broker

2202 N. Westshore Blvd. • Suite 200 • Tampa, FL 33607

FOR MORE INFORMATION CONTACT :

CRAIG M. CAPO

Cell: 813.335.3361

craig@ipgtampa.com

www.tampaindustrialrealestate.com

JOHN AYERS, CCIM

Cell: 813.690.6539

jayers@ccim.net

No warranty or representation, expressed or implied, is made as to the accuracy of the information contained herein, and same is submitted subject to errors, omissions, change of price, rental or other conditions, withdrawal without notice, and to any special listing conditions imposed by our principals.