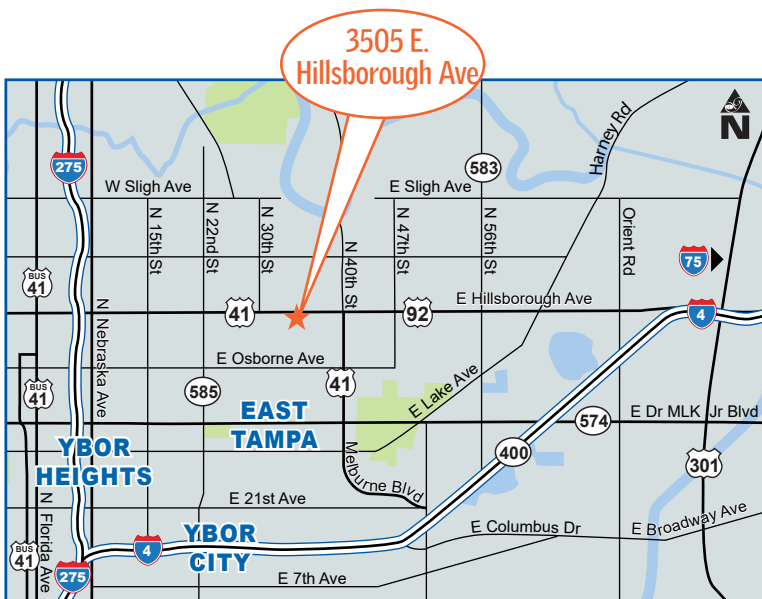


950 Sq. Ft. Office Space FOR LEASE



Viva Professional Center 3505 E. Hillsborough Avenue • Tampa, FL 33610



SUITE 103:	950 Sq. Ft.
SUITE 202:	950 Sq. Ft.
SUITE 203:	950 Sq. Ft.
SUITE 202 & 203:	1,900 Sq. Ft.
OFFICE:	100%
PARKING LOT:	32 Spaces
TRAFFIC COUNT:	50,000 Cars Per Day
YEAR BUILT:	2016
LEASE PRICE:	\$19.95 NNN

FOR MORE INFORMATION CONTACT:

Industrial Property Group, Inc.

Licensed Real Estate Broker

2202 N. Westshore Blvd. • Suite 200 • Tampa, FL 33607

JOHN AYERS, CCIM

Cell: 813.690.6539 jayers@ccim.net

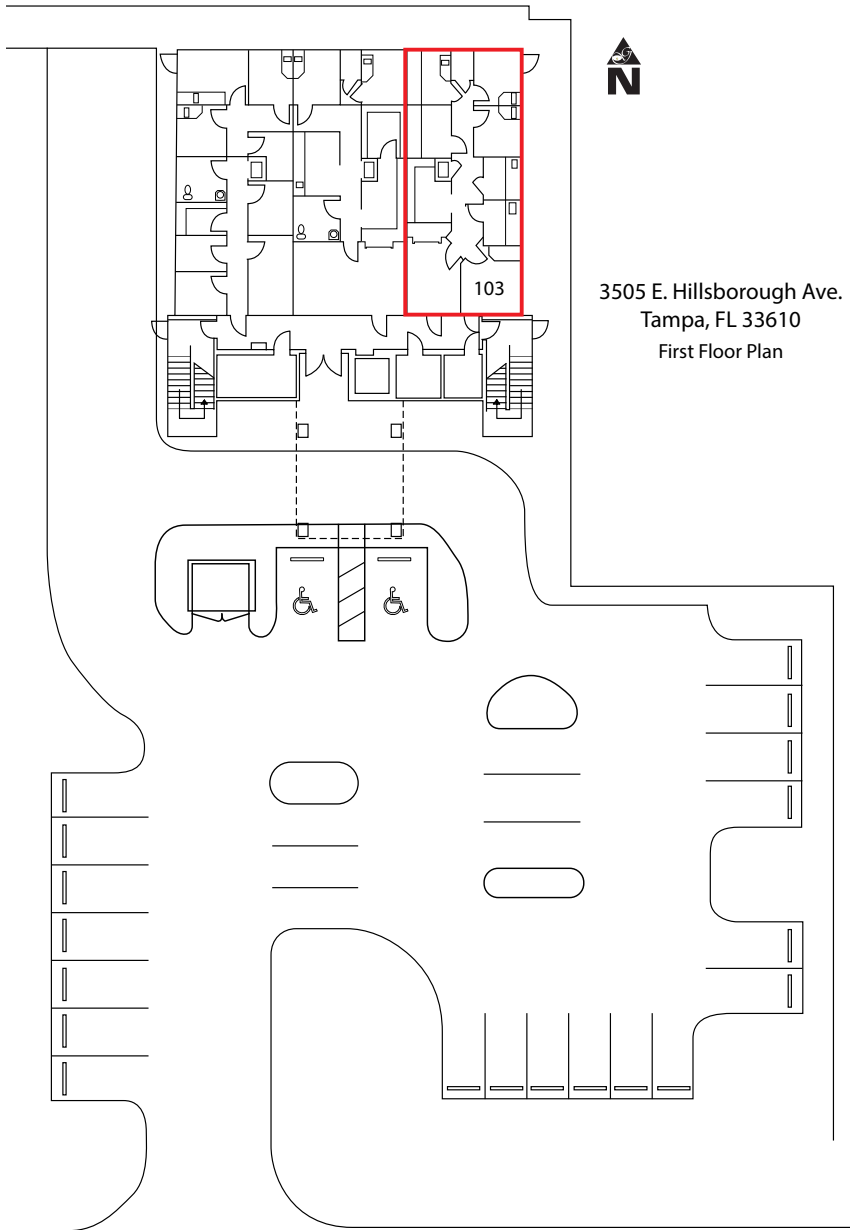
www.tampaindustrialrealestate.com

No warranty or representation, expressed or implied, is made as to the accuracy of the information contained herein, and same is submitted subject to errors, omissions, change of price, rental or other conditions, withdrawal without notice, and to any special listing conditions imposed by our principals.

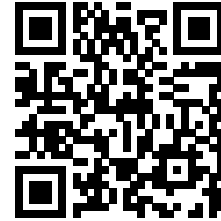
Viva Professional Center

3505 E. Hillsborough Avenue
Tampa, FL 33610

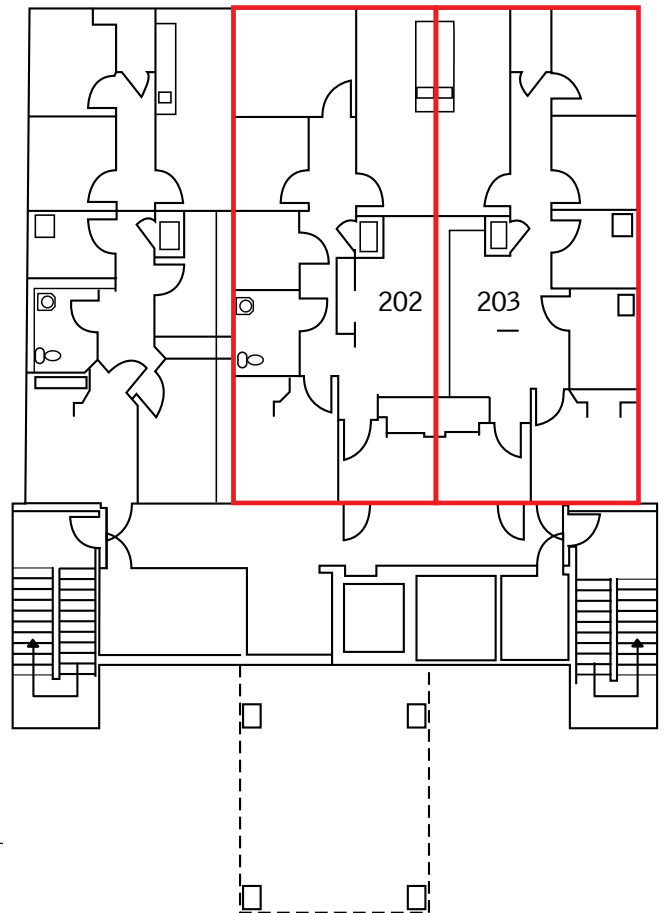
EAST HILLSBOROUGH AVENUE



3505 E. Hillsborough Ave.
Tampa, FL 33610
First Floor Plan



Second Floor Plan



GIBBENS AVENUE
(Bellmont Avenue Per Plat)

FOR MORE INFORMATION CONTACT:

Industrial Property Group, Inc.

Licensed Real Estate Broker

2202 N. Westshore Blvd. • Suite 200 • Tampa, FL 33607

JOHN AYERS, CCIM

Cell: 813.690.6539 jayers@ccim.net

www.tampaindustrialrealestate.com

No warranty or representation, expressed or implied, is made as to the accuracy of the information contained herein, and same is submitted subject to errors, omissions, change of price, rental or other conditions, withdrawal without notice, and to any special listing conditions imposed by our principals.