

# 7,864 Sq. Ft. Office Building FOR SALE



## Viva Professional Center 3505 E. Hillsborough Avenue • Tampa, FL 33610



<b>BUILDING SIZE:</b>	7,864 Square Feet
<b>PARKING LOT:</b>	32 Spaces
<b>SECURITY:</b>	Gated Property, Time Locked Front Entry, Security Cameras, Alarm System.
<b>ZONING:</b>	C-I (Commercial Intensive)
<b>TRAFFIC COUNT:</b>	50,000 Cars Per Day
<b>YEAR BUILT:</b>	2016
<b>SALE PRICE:</b>	\$1,879,000.00

FOR MORE INFORMATION CONTACT:

**Industrial Property Group, Inc.**

Licensed Real Estate Broker

2202 N. Westshore Blvd. • Suite 200 • Tampa, FL 33607

**JOHN AYERS, CCIM**

Cell: 813.690.6539 [jayers@ccim.net](mailto:jayers@ccim.net)

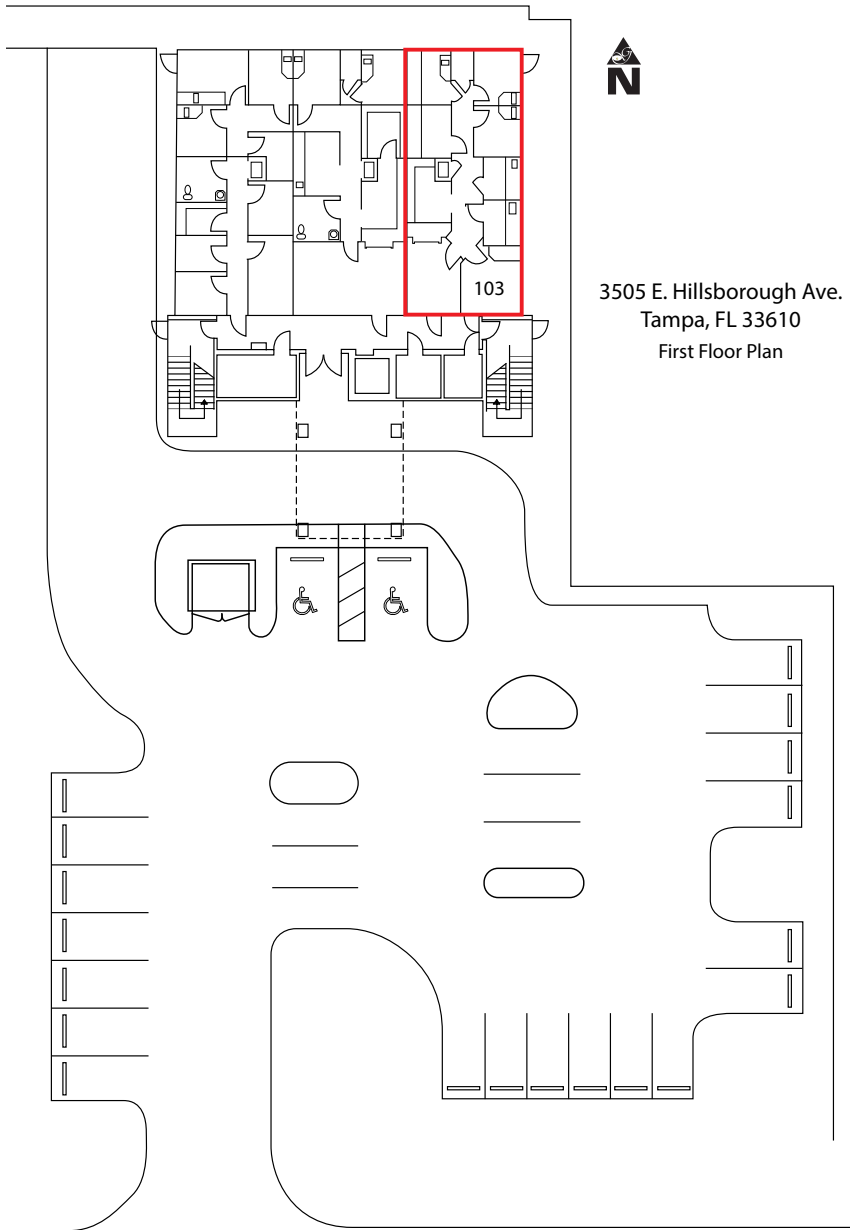
[www.tampaindustrialrealestate.com](http://www.tampaindustrialrealestate.com)

No warranty or representation, expressed or implied, is made as to the accuracy of the information contained herein, and same is submitted subject to errors, omissions, change of price, rental or other conditions, withdrawal without notice, and to any special listing conditions imposed by our principals.

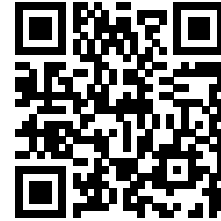
# Viva Professional Center

**3505 E. Hillsborough Avenue**  
**Tampa, FL 33610**

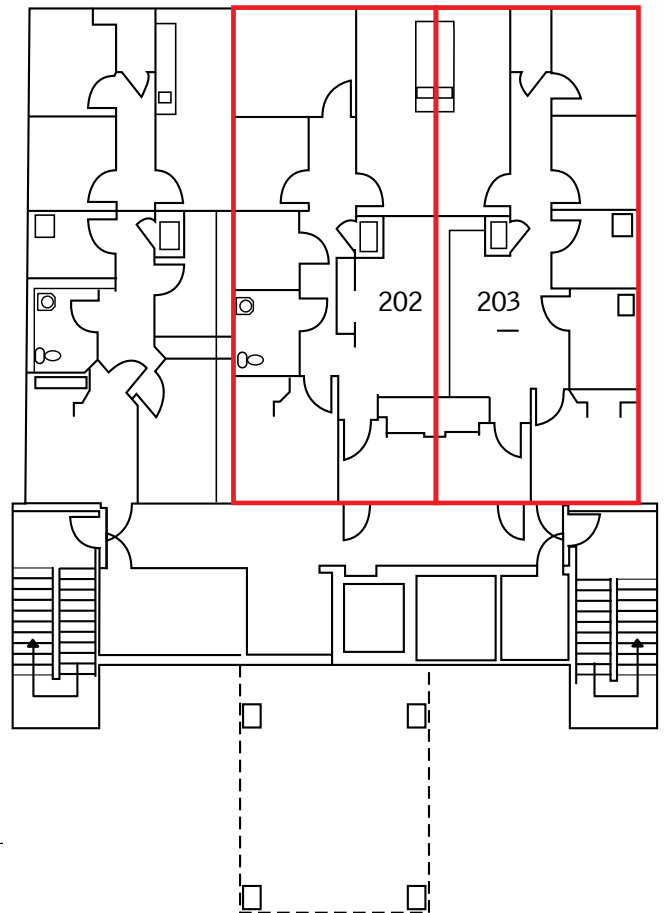
EAST HILLSBOROUGH AVENUE



3505 E. Hillsborough Ave.  
Tampa, FL 33610  
First Floor Plan



Second Floor Plan



GIBBENS AVENUE  
(Bellmont Avenue Per Plat)

FOR MORE INFORMATION CONTACT:

**Industrial Property Group, Inc.**

Licensed Real Estate Broker

2202 N. Westshore Blvd. • Suite 200 • Tampa, FL 33607

**JOHN AYERS, CCIM**

Cell: 813.690.6539 [jayers@ccim.net](mailto:jayers@ccim.net)

[www.tampaindustrialrealestate.com](http://www.tampaindustrialrealestate.com)

No warranty or representation, expressed or implied, is made as to the accuracy of the information contained herein, and same is submitted subject to errors, omissions, change of price, rental or other conditions, withdrawal without notice, and to any special listing conditions imposed by our principals.